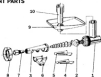


JUICE EXTRACTOR ATTACHMENT PARTS

1. Main housing
2. Gear & auger
3. Front housing
4. Fine screen
5. Coarse screen
6. Spout cover
7. Regulating screw
8. Locking ring
9. Hopper tray
10. Pusher



Note: Use coarse screen (#5) for wheat grass.
Use the fine screen (#4) for fruits and berries.

ASSEMBLING AND OPERATING

The wheat grass juicer is assembled in the following sequence: Insert a screen (#5 or #4) securely into the front housing (#3). Then screw in the regulating screw (#7) as far as possible. Insert the gear and auger (#2) into the main housing (#1). Slide the front housing (#3) over the auger so that the groove on its front edge locks onto the tab on the housing (#1). Tighten the assembly with the locking ring (#8). Attach the spout cover (#6) and hopper tray (#9). Place a small amount of olive oil or petroleum jelly on the stainless steel ring on the motor base where the attachment joins it. Then attach the assembled wheat grass juicer attachment to the motor base at a 45° angle to the right (as shown below) and rotate it to the vertical position to lock it in place.



After connecting the plug to an electrical outlet, the juicer is ready for operation. With the motor switched on, place wheat grass or fruit into the hopper tray and gradually feed it down into the chute, using the pusher if necessary. Place a container under the juice spout (#6) and another container to catch the pulp under the regulating screw (#7). Tighten or loosen the regulating screw as necessary depending on juice content of the grass. If the pulp seems wet, you may run it through the juicer a second time.